

Attenuator and Distribution System

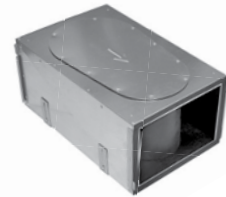
Zehnder ComfoWell 320

Benefits

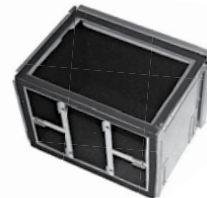
- All air treatment functions available: attenuator, fine filter, active carbon filter, manifold box
- Modular design
- Compact dimensions
- Easy to clean
- Components connected with sliding profiles for easy mounting
- Pipes connected by end pieces with sleeves
- Directly connected to all components of the ComfoWell system
- Very good sound attenuation
- Two silencers can be used in series for maximum sound reduction
- Mounting set available for vertical mounting of silencers on ComfoAir 200 and ComfoAir 350
- High-efficiency fine filters up to filter class MERV15 available
- Odor neutralisation by active carbon filter available
- Components available in width of 126" to connect 6 ComfoTubes 3" (75)

Article number

Designation	Art. no.	Reference No
Attenuator CW-S 320	990 323 501	9319
Manifold box CW-D 320	990 323 531	9331
Filter housing CW-F 320	990 323 551	9333



ComfoWell attenuator



ComfoWell manifold box



ComfoWell filter housing

Attenuator and Distribution System

Zehnder ComfoWell 320

Description

Attenuator

Zehnder ComfoWell Attenuator CW-S 320. Compact rectangular attenuator with high-efficiency special sound absorbing foam pack and low pressure losses. The attenuator can be used on its own or in combination with any add-on from the ComfoWell system. It is connected to all add-ons with a folded joint and clamping rail to create an airtight seal. The sound absorbing foam element can be removed for inspection and cleaning. The silencer is mounted on a wall or ceiling with height-adjustable mounting brackets. Mounting accessories are supplied with the unit.

Technical data:

Insertion loss: 12.6 dB / 250 Hz

Housing: Galvanised steel

Sound absorbing element: Special foam with hygienic coating

Dimensions:

Length: 19.7"

Depth: 12.6"

Height: 9.0"

Manifold box

Zehnder ComfoWell Manifold Box CW-D 320. Compact sound-absorbing manifold box with closed-cell, silencer inner lining, fits mounting plate for ComfoTube 6 x 3" (75) ventilation pipes. The mounting plate connection can be moved from the front to the side. The manifold box can be used on its own or in combination with any add-on. It is connected to all add-ons with a folded joint and clamping rail to create an airtight seal. The manifold box features an access panel for easy cleaning and adjustment of the ComfoTube ventilation pipes. Mounting accessories are supplied with the unit.

Material: Galvanised steel

Dimensions:

Length: 9.0"

Width: 12.6"

Height: 9.0"

Filter housing

Zehnder ComfoWell Filter Housing CW-F 320. Compact filter housing for mounting in supply line, to accommodate pollen filter MERV15 or active carbon filter element. Filter elements are not supplied with the unit. The manifold box can be used on its own or in combination with any add-on from the ComfoWell system. It is connected to all add-ons with a folded joint and clamping rail to create an airtight seal. It is mounted with adjustable mounting brackets; mounting accessories are included.

Material: Galvanised steel

Dimensions:

Length: 11.8"

Width: 12.6"

Height: 9.0"

Attenuator and Distribution System

Zehnder ComfoWell 320

Specifications

Material:

Housing: Galvanised steel

Inner lining: Closed-cell melamine resin foam

Permissible operating temperature range: -13°F to 140°F

Maximum airflow: 141 cfm at normal ventilation level

Accessories

Designation	Art. no.	Reference No
Mounting plate CW-M 320-6 x 3" (75)	990 323 522	9329
End plate CW-P 320 - 5" (125)	990 323 511	9354
End plate CW-P 320 - 6" (150)	990 323 562	9372
End plate CW-P 320 - 6.3" (160)	990 323 512	9321
End plate CW-P 320 - 7" (180)	990 323 527	9322
Mounting set CW-K 320 - CA 200	990 323 517	9325
Mounting set CW-K 320 - CA 350	990 323 526	9328
Fine dust filter CW-MERV13 320	990 323 603	9302
Fine dust filter CW-MERV15 320	990 323 604	9343
Active carbon filter CW-FC 320	990 323 605	9355

Description of accessories

Mounting plate:

Zehnder ComfoWell Mounting Plate CW-M320-6 x 3" (75) for connecting 6x Zehnder ComfoTube 3" (75) flexible ducts. Supplied with guard and clamping rails. Mounting plate can also be used for mounting in concrete.

End plate:

Zehnder ComfoWell End Plate CW-P 320 - 5" / 6" / 6.3" / 7" (with central support) for connecting the ComfoWell silencer and distribution system to a 5" / 6" / 6.3" / 7" round duct. Clamping rails included.

Mounting set:

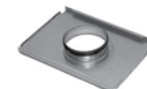
A special mounting set is available for the Zehnder ComfoWell 320 silencer and distribution system for direct mounting on the ComfoAir 200 / ComfoAir 350 ventilation unit. The set includes all the necessary accessories (screws, brackets and mounting brackets).

Filter:

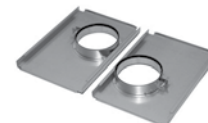
Filter for mounting in filter housing CW-F 320. Available filter classes include MERV13, MERV15 and an active carbon filter for odor neutralisation.



Mounting plate



End plate



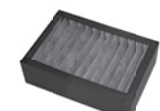
Mounting set



Fine dust filter MERV13



Fine dust filter MERV15



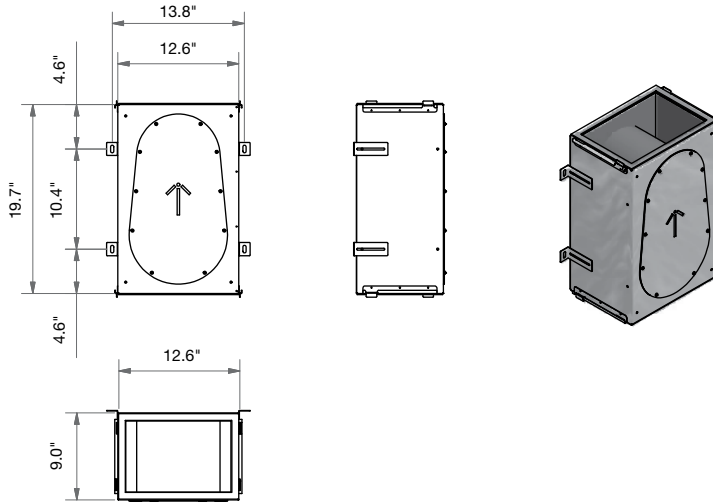
Active carbon filter FC

Attenuator and Distribution System

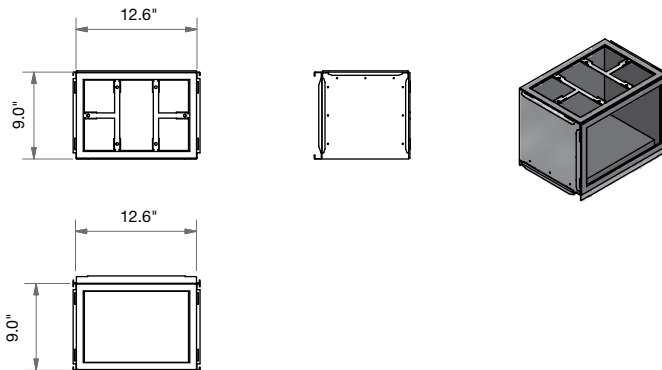
Zehnder ComfoWell 320

Dimensional drawings

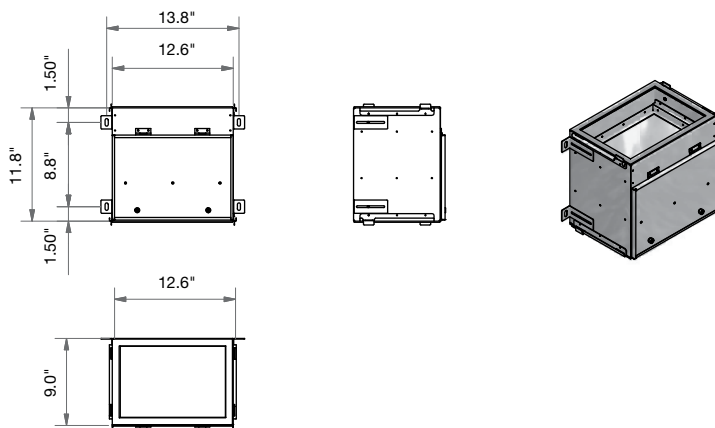
Attenuator



Manifold box



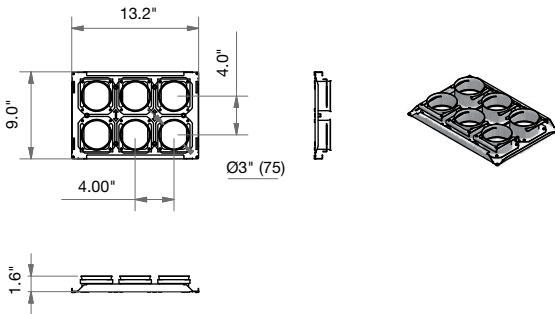
Filter housing



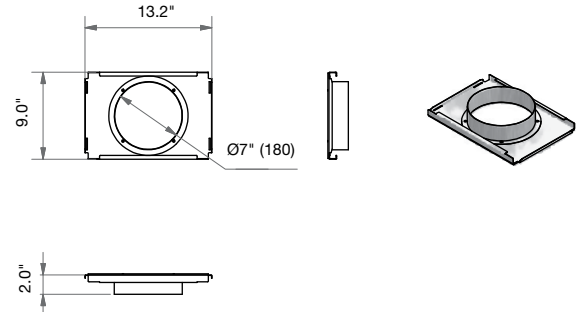
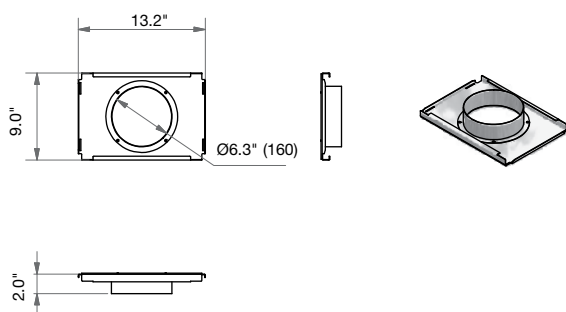
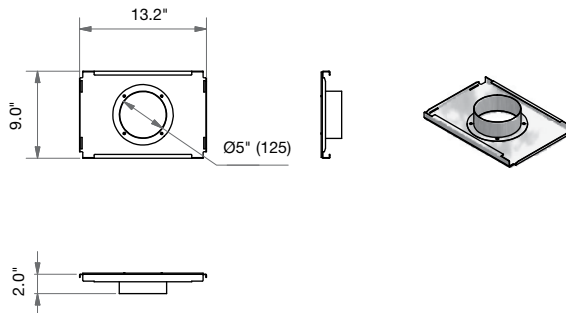
Attenuator and Distribution System

Zehnder ComfoWell 320

Mounting plate



End plate



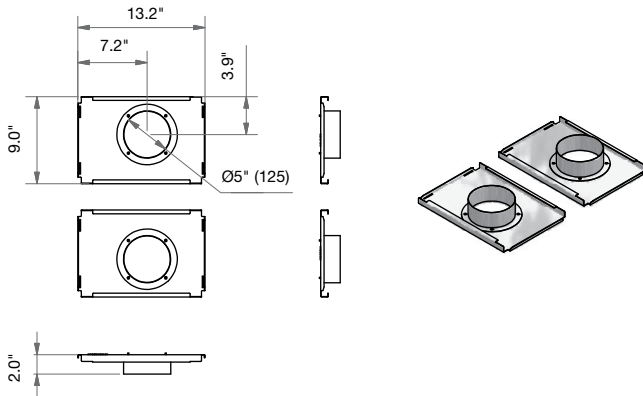
always
around you

zehnder®

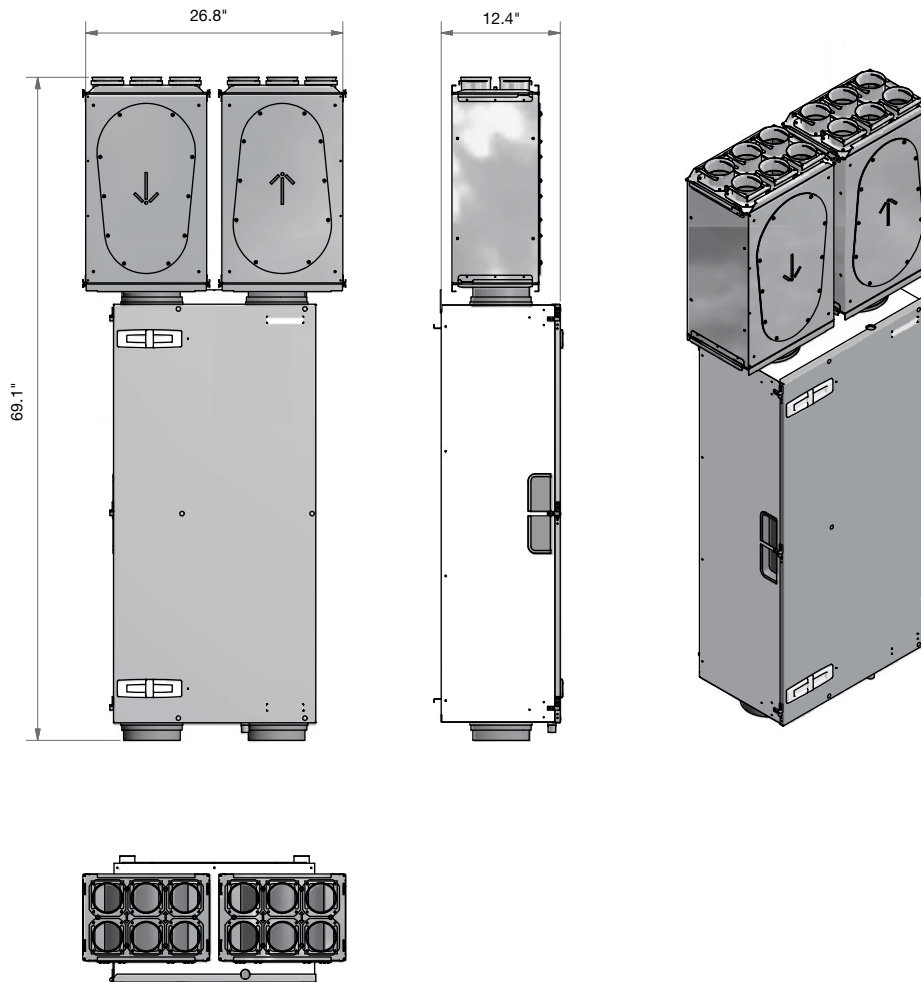
Attenuator and Distribution System

Zehnder ComfoWell 320

Mounting set CA 200



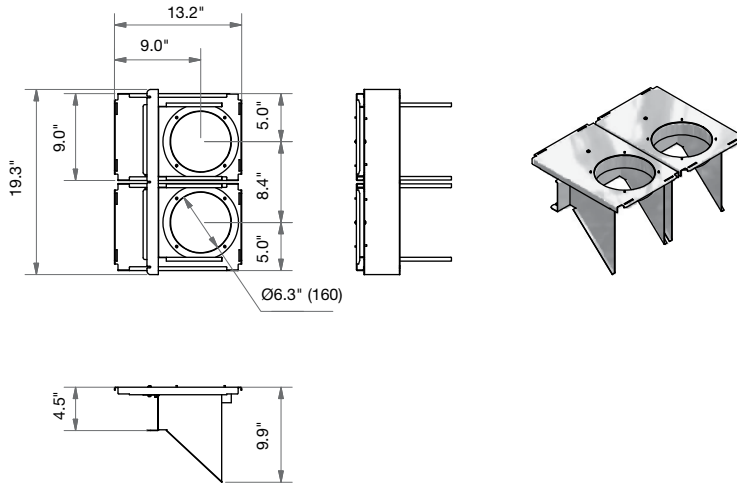
ComfoAir 200 with mounting set



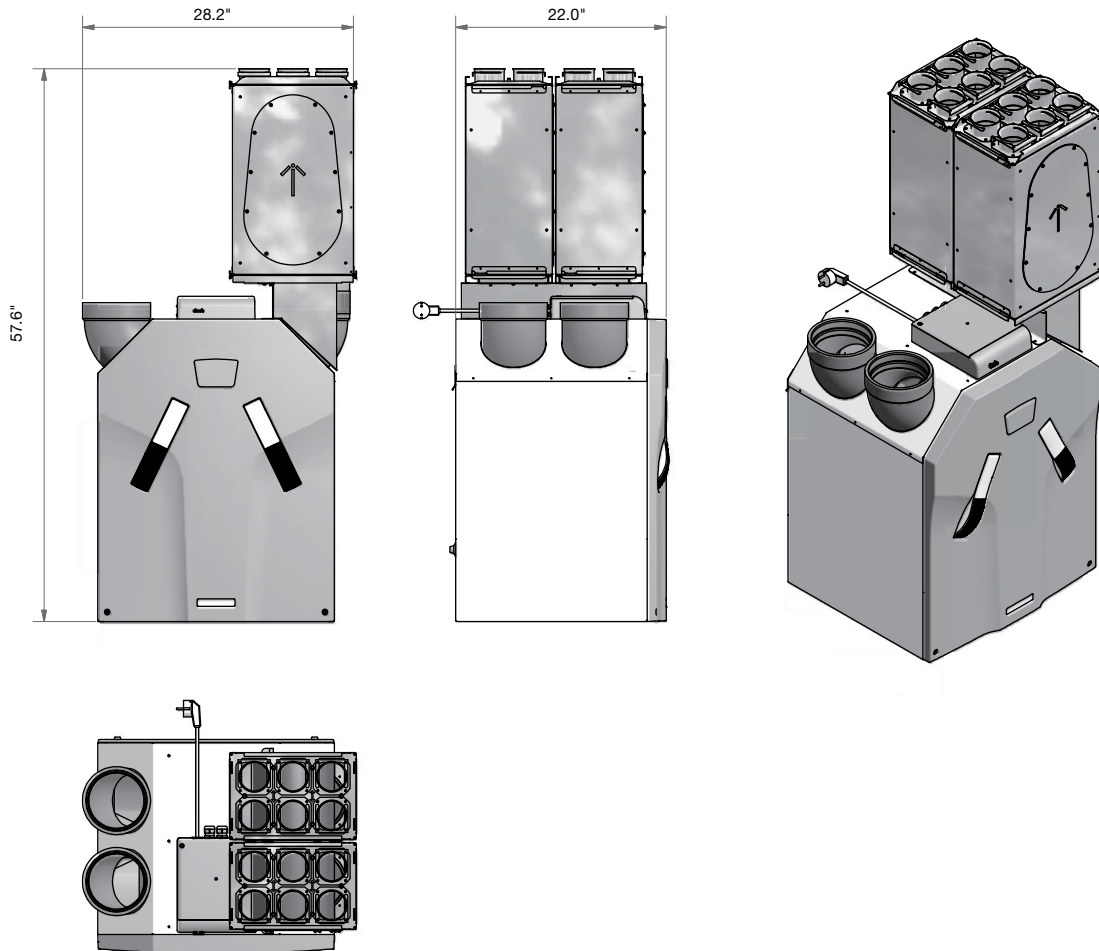
Attenuator and Distribution System

Zehnder ComfoWell 320

Mounting set CA 350



ComfoAir 350 with mounting set (Right hand configuration shown)

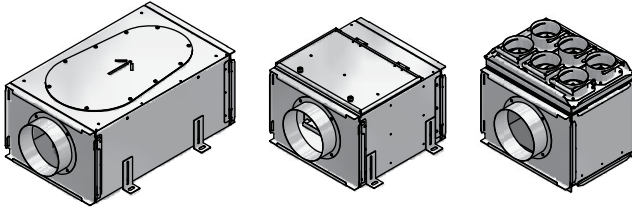


Attenuator and Distributin System

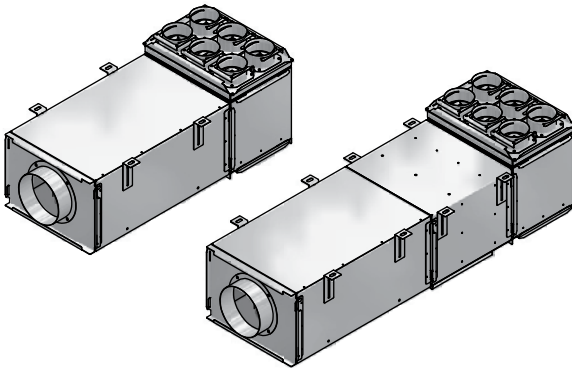
Zehnder ComfoWell 320

Usage scenarios

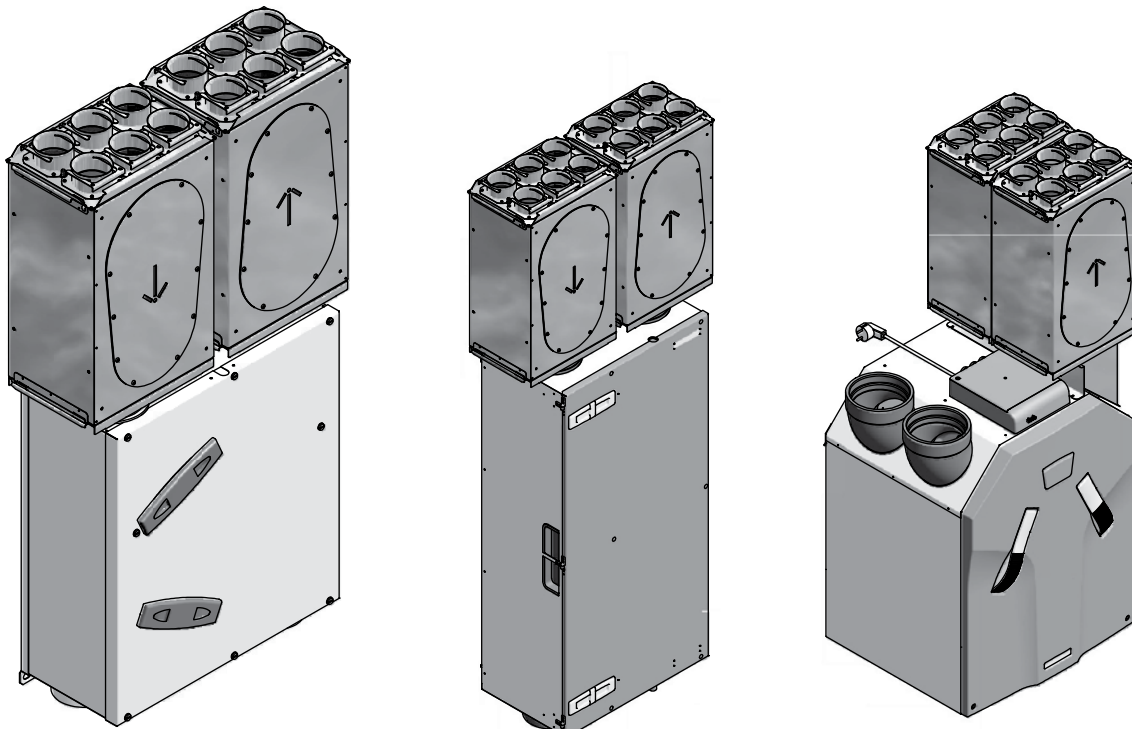
Standalone



Combined



Compact with ventilation unit



always
around you

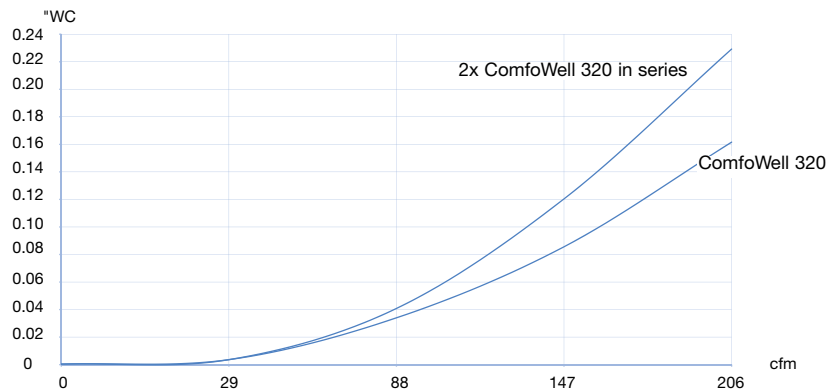


Attenuator and Distribution System

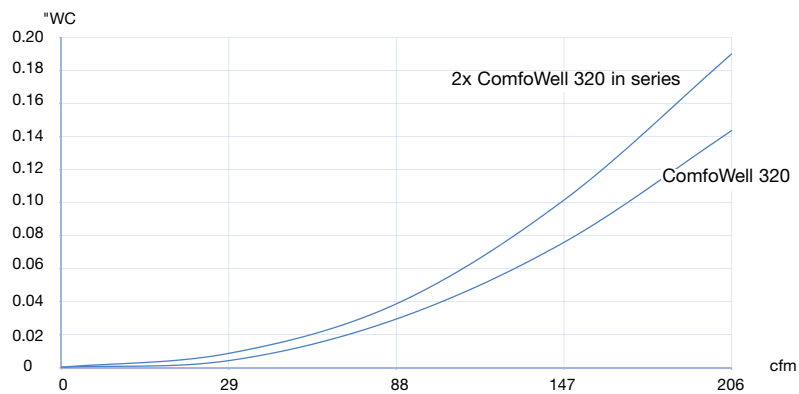
Zehnder ComfoWell 320

Pressure losses

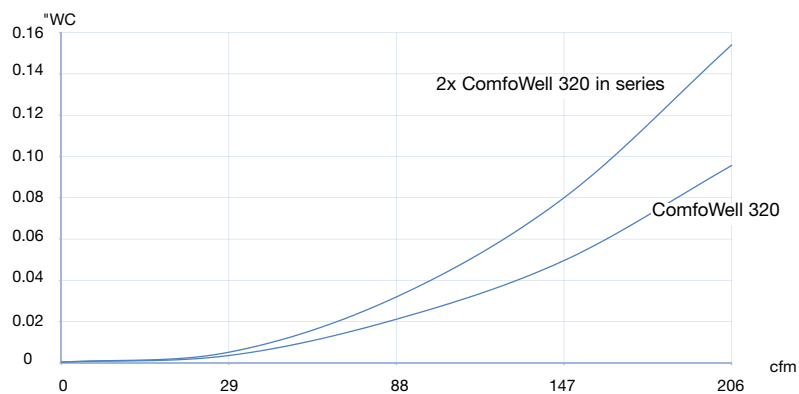
ComfoWell attenuator CW-S320 with end plate CW-P320 - 5" (125)



ComfoWell attenuator CW-S320 with end plate CW-P320 - 6.3" (160)



ComfoWell attenuator CW-S320 with end plate CW-P320 - 7" (180)



always
around you



Attenuator and Distribution

Zehnder ComfoWell 320

System Insertion loss

1x end plate CW-P320 - 6"/6.3"/7" + 1x attenuator CW-S320 +
1x end plate CW-P320 - 6"/6.3"/7"

Frequency Hz	63	125	250	500	1000	2000	4000	8000
Connection 6" (150) [dB]	8.1	11.9	14.5	14.9	19.1	35.9	28.3	29
Connection 6.3" (160) [dB]	6.9	13.1	12.6	12.7	18	34.8	27.2	28.8
Connection 7" (180) [dB]	7.5	12.4	12.9	12.6	19.7	33.5	26.3	27.5

1x end plate CW-P320 - 6"/6.3"/7" + 2x attenuators CW-S320
+ 1x end plate CW-P320 - 6"/6.3"/7"

Frequency Hz	63	125	250	500	1000	2000	4000	8000
Connection 6" (150) [dB]	10.6	19.4	24.7	26.4	37.8	58.3	52.8	50.8
Connection 6.3" (160) [dB]	10.5	19.4	23.7	25	39.1	56.2	51.6	50
Connection 7" (180) [dB]	12.7	18.9	24.1	24.2	39	59.3	51.1	49.5

1x end plate CW-P320 - 6"/6.3"/7" + 1x attenuator CW-S320 +
1x mounting plate CW-M320-6 x 3" (75)

Frequency Hz	63	125	250	500	1000	2000	4000	8000
Connection 6"/6.3"/7" [dB]	18.5	15.4	13	16.4	18.5	35.6	30.9	31.2

1x end plate CW-P320 - 6"/6.3"/7" + 2x attenuators CW-S320
+ 1x mounting plate CW-M320-6 x 3" (75)

Frequency Hz	63	125	250	500	1000	2000	4000	8000
Connection 6"/6.3"/7" [dB]	20.6	22.7	22.4	31	38.6	55.8	52.7	54.7

ZA-CSY-FLYERTS222, V1211, en_us, subject to changes